

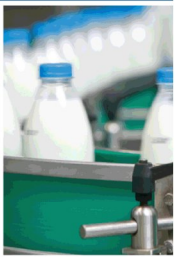
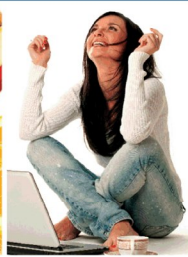
Wareham & Associates provides training to assist organisations in improving their business processes and meeting the requirements of international standards.

We provide training in: Food Safety • Quality • Environmental • OHSA • Sustainability
• Lean Manufacturing Tools / Techniques • Integrated Risk Management



OUR MISSION

To create internationally competitive risk management and sustainability solutions.



OHSAS 18001:2007 INTRODUCTION TO OCCUPATIONAL HEALTH & SAFETY MANAGEMENT SYSTEMS

(DATASHEET # 7.1-17)

DURATION: 1 DAY

Who should attend this training?

This course is targeted at department managers, supervisors and team leaders who are responsible for sustaining the **Occupational Health and Safety Management System**.

What will you learn about?

- Reasons for Occupational Health and Safety
- 4.1 General Requirements
- 4.2 Occupational, Health and Safety Policy
- 4.3 Planning (Risk Assessment/HIRA)
- 4.3.2 Legal Requirements
- The OHS Act 85 of 1993, incl Regulations
- 4.3.3 Objectives and Programmes
- 4.4 Implementation and Operation
- 4.4.1 Resources, Roles & Responsibility
- 4.4.2 Competence Training & Awareness
- 4.4.3 Communication, Participation & Consultation
- 4.5 Document Control
- 4.4.6 Operational Control
- Change Control
- 4.4.7 Emergency Prep & Response
- 4.5 Checking
- 4.5.1 Performance Monitoring and Measurement
- 4.5.2 Evaluation of Compliance
- 4.5.3.2 Nonconformity, CAR and Preventive Action
- 4.5.5 Internal Audit
- 4.6 Management Review

What is the course all about?

This course is designed to give an introduction into the OSHAS 18001 standard, the key OSH legislation and the basics of OSH management.

Prior Experience & Learning

Supervisory skills and a sound working knowledge of the operation within the context of the company's occupational health and safety management system.

Assessment & Certification

Candidates will be awarded a certificate from Wareham & Associates indicating successful completion of the course.



CONSULTING, FACILITATION & TRAINING

For more info contact

Emily on 021 713 2380 or email emily@wha.co.za